

# Call for Projects

## 2025-2050 Long Range Transportation Plan Update



**Short-term/TIP 2026-2030; Mid-Term 2031-2040 & Long-Term 2041-2050**

Submit projects for consideration in the 2025-2050 Long-Range Transportation Plan by 4:00 p.m. on Thursday, September 26, 2024.

### Background

As the federally designated Metropolitan Planning Organization (MPO) for Richland County, [Per Federal regulations](#), the MPO Richland County Regional Planning Commission (RCRPC) is responsible for developing and maintaining the region's Long-Range Transportation Plan (LRTP) that guides the transportation decision making and funding decisions for the next 25 years.

A key step in developing and updating the Long-Range Transportation Plan (LRTP) is to identify a list of priority transportation projects for the Richland County Transportation Study Area. The development of this project list is a federal requirement and includes all projects that intend to use federal funding sources or are otherwise considered regionally significant.

This planning process is undertaken by RCRPC transportation staff every five years and includes a 25-year planning horizon, in this case 2025 - 2050. The 2025-2050 LRTP is scheduled for completion and approval by the Commission in early 2025.

### Call for Projects

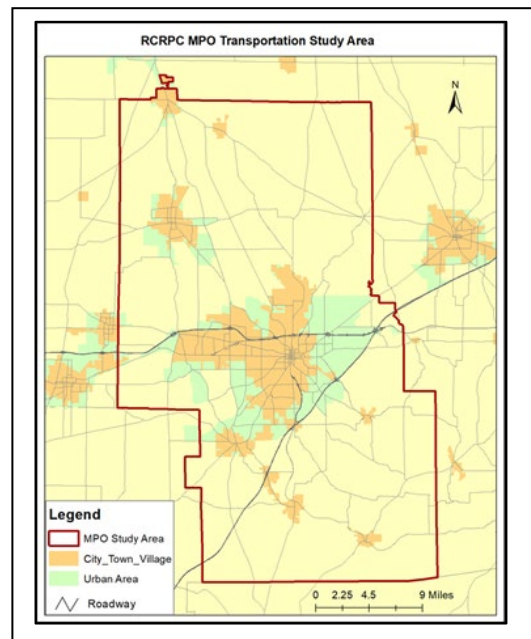
Jurisdictions and transportation agencies are eligible to nominate transportation projects for consideration in the LRTP. Projects must be located within the RCRPC Transportation Planning Study Area. Please see the map at right for the boundary of the MPO Transportation Study Area.

Eligible project types include construction of new roadways, improvements to existing roadways, transit projects, bicycle and pedestrian facilities, and other transportation improvements as allowed by federal law and regulations. Any roadway projects are required to have a current or future functional classification as a Federal Aid Urban (FAU) route: Minor Collector and above. Current roadway classifications can be found on ODOT's interactive map: [Roadway Functional Classification Map](#)

Funds will not be distributed as a result of this solicitation. However, there are several reasons to nominate projects for the LRTP:

1. Identifying regional transportation priorities will direct the investment of federal funds.
2. Being listed in the LRTP will help communicate information to the public about projects planned for our region.
3. For federal transportation funding programs, only projects included in the LRTP are eligible for funds.
4. For some federal funding programs, projects receive extra consideration if they are included in the LRTP.

### Submission Instructions



To learn more about the LRTP 2050 Call for Projects and to access the application, please visit the website: <https://www.rcrpc.org/get-involved>. Please download and save the application to your computer and fill out a separate form for each project. Applications will be accepted digitally (preferred method) or mailed. Completed forms can be emailed to Philip Roth [proth@structurepoint.com](mailto:proth@structurepoint.com) and carbon copy (CC) to Pong Wu [pwu@rcrpc.org](mailto:pwu@rcrpc.org)

**The deadline to submit project nominations is Thursday, September 26, 2024 by 4:00 p.m.**

### Eligible Projects

This Call for Projects is for transportation projects including roads and highways, bridges, non-motorized, and transit. The attached links in the last are provided as guidance regarding eligible activities for various federal and state funding programs including the discretionary funding programs.

### Questions

For more information and project updates, please visit: [www.rcrpc.org/regional-transportation-plan](http://www.rcrpc.org/regional-transportation-plan) or contact the project team to answer questions concerning the project/program eligibility and application submittal.

PHILIP ROTH  
Project Manager  
American Structurepoint, Inc./ASI  
OFFICE: 317.547.5580  
EMAIL: [proth@structurepoint.com](mailto:proth@structurepoint.com)

PONG WU  
RCRPC Transportation  
Technical Director  
OFFICE: 419.774.6200  
EMAIL: [pwu@rcrpc.org](mailto:pwu@rcrpc.org)

**If you have questions about the estimated project cost in the attached Unit Cost spreadsheets, please contact Philip Roth, ASI staff may help in generate planning level cost estimates for budgetary purposes. Note that a spreadsheet is available for assisting in the generation of planning level cost estimates.**

### Guidance

Surface Transportation Black Grant (STBG or STU)  
<https://www.fhwa.dot.gov/bipartisan-infrastructure-law/stbg.cfm>  
Transportation Alternative Set-Aside Program (TA or TAP)  
<https://www.fhwa.dot.gov/bipartisan-infrastructure-law/ta.cfm>

Carbon Reduction Program (CRP)  
[https://www.fhwa.dot.gov/bipartisan-infrastructure-law/crp\\_fact\\_sheet.cfm](https://www.fhwa.dot.gov/bipartisan-infrastructure-law/crp_fact_sheet.cfm)

Promoting Resilient Operations for Transformative, Efficient, and Cost-Savings Transportation (PROTECT)  
<https://www.fhwa.dot.gov/bipartisan-infrastructure-law/promote.cfm>

Safe Streets and Roads for All (SS4A)  
[https://www.fhwa.dot.gov/bipartisan-infrastructure-law/ss4a\\_fact\\_sheet.cfm](https://www.fhwa.dot.gov/bipartisan-infrastructure-law/ss4a_fact_sheet.cfm)

Urbanized Area Formula Grants Program (Section 5307)  
<https://www.transit.dot.gov/funding/grants/fact-sheet-urbanized-area-formula-grants-program>

Capital Investment Grants Program (Section 5309)  
<https://www.transit.dot.gov/funding/grants/fact-sheet-capital-investment-grants-program>

