

WELCOME

JOIN THE CONVERSATION ABOUT TRANSPORTATION HERE

What is a Long-Range Transportation Plan?

- A primary function of a Metropolitan Planning Organization (MPO)
- Long-term (20+ years) transportation policies and cost-constrained list of capacity projects
- Must be updated every five years

What is the plan's purpose?

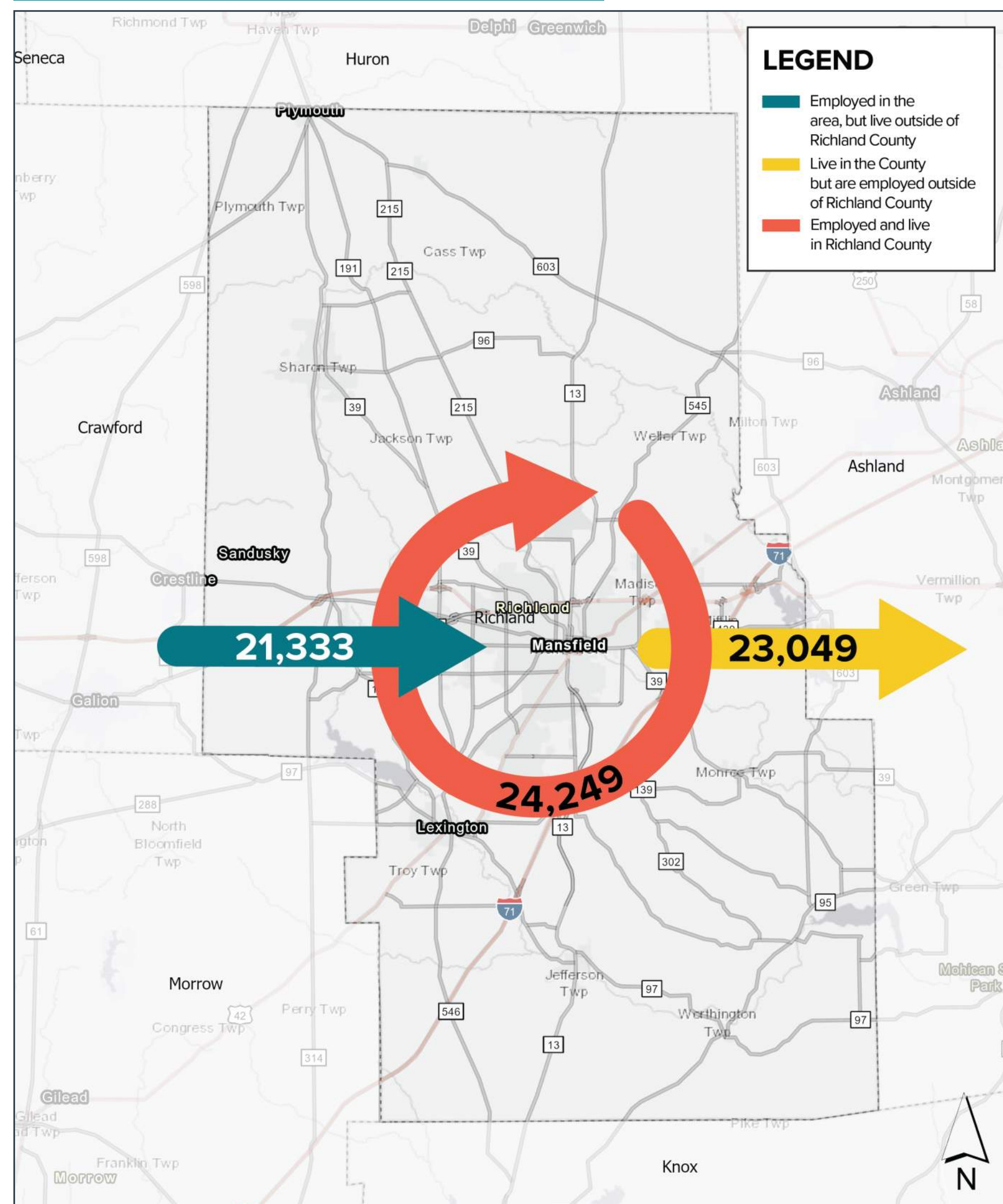
- Roadmap for effective decision-making
- Helps obtain funding opportunities
- Measures success over time with defined performance measures
- Ensures environmental justice and public involvement in capital improvement projects
- Ensures consistency with the statewide transportation plan

What does it include?

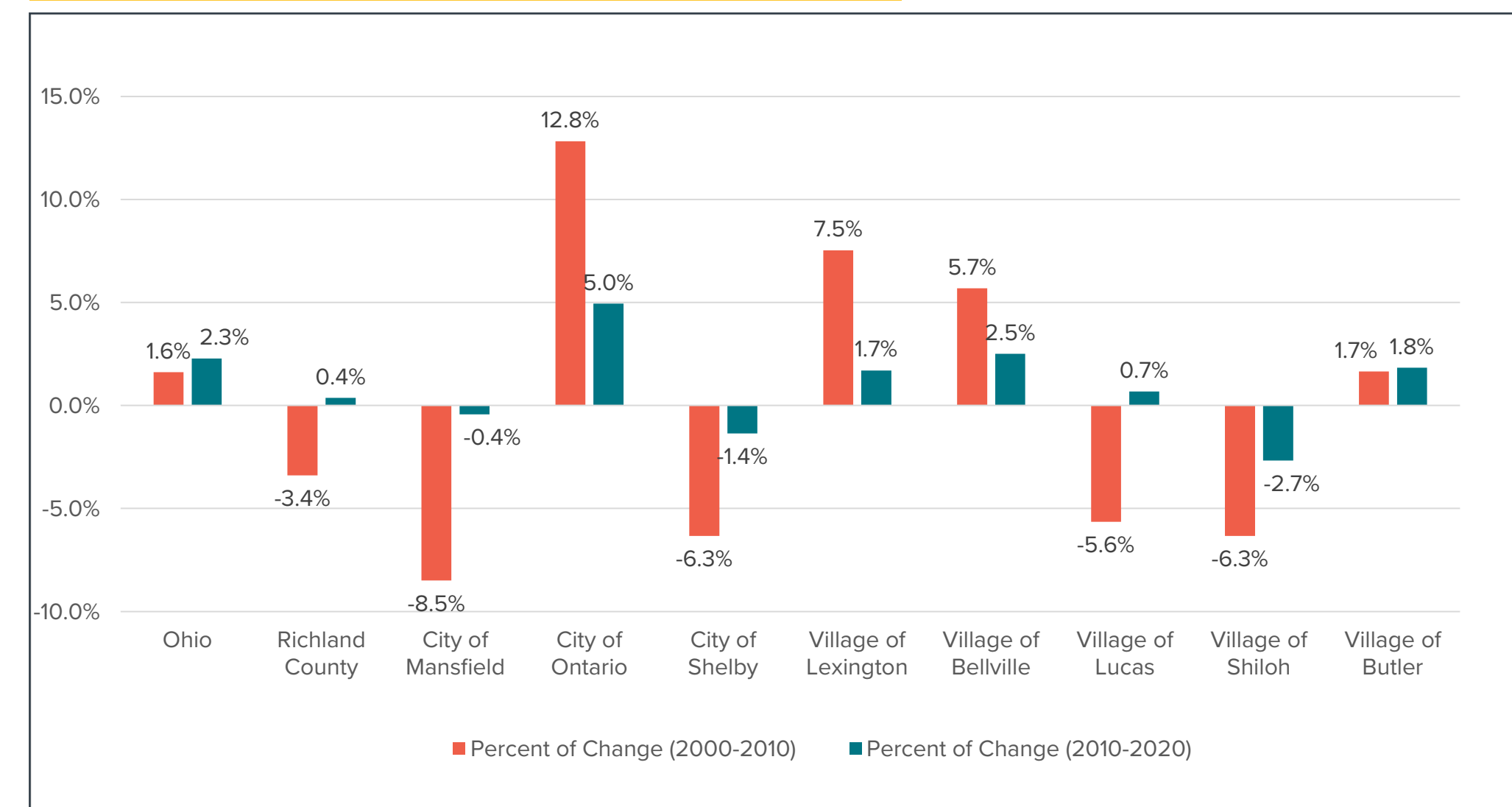


EXISTING CONDITIONS

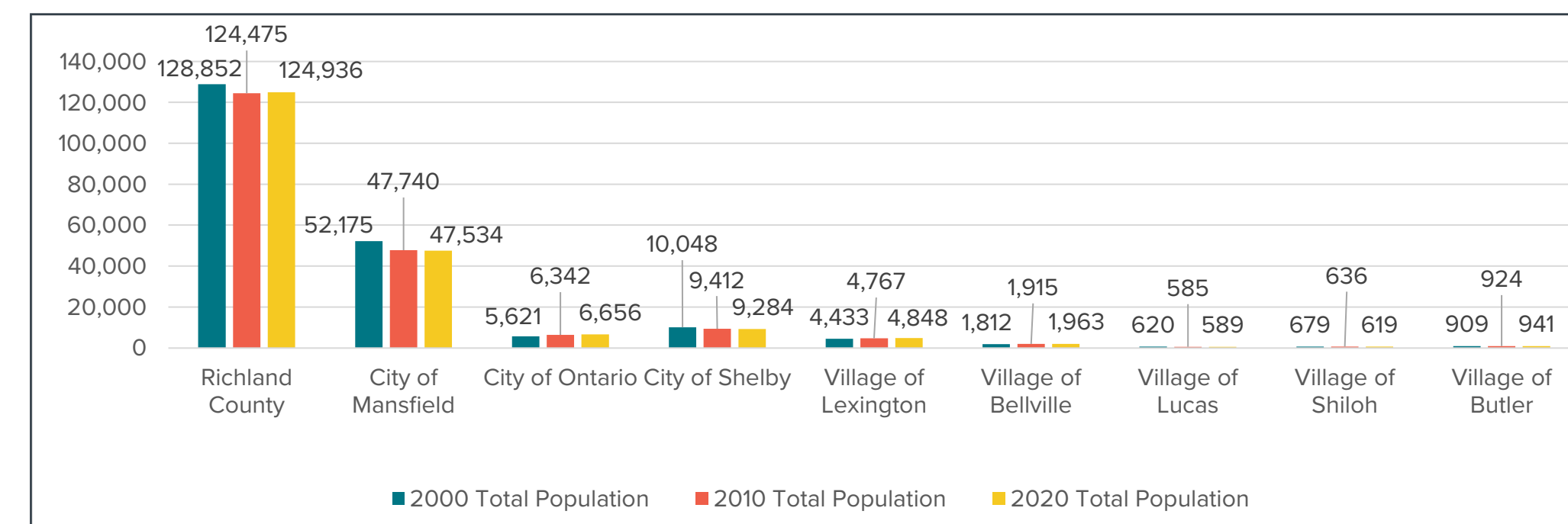
Commuter Flows



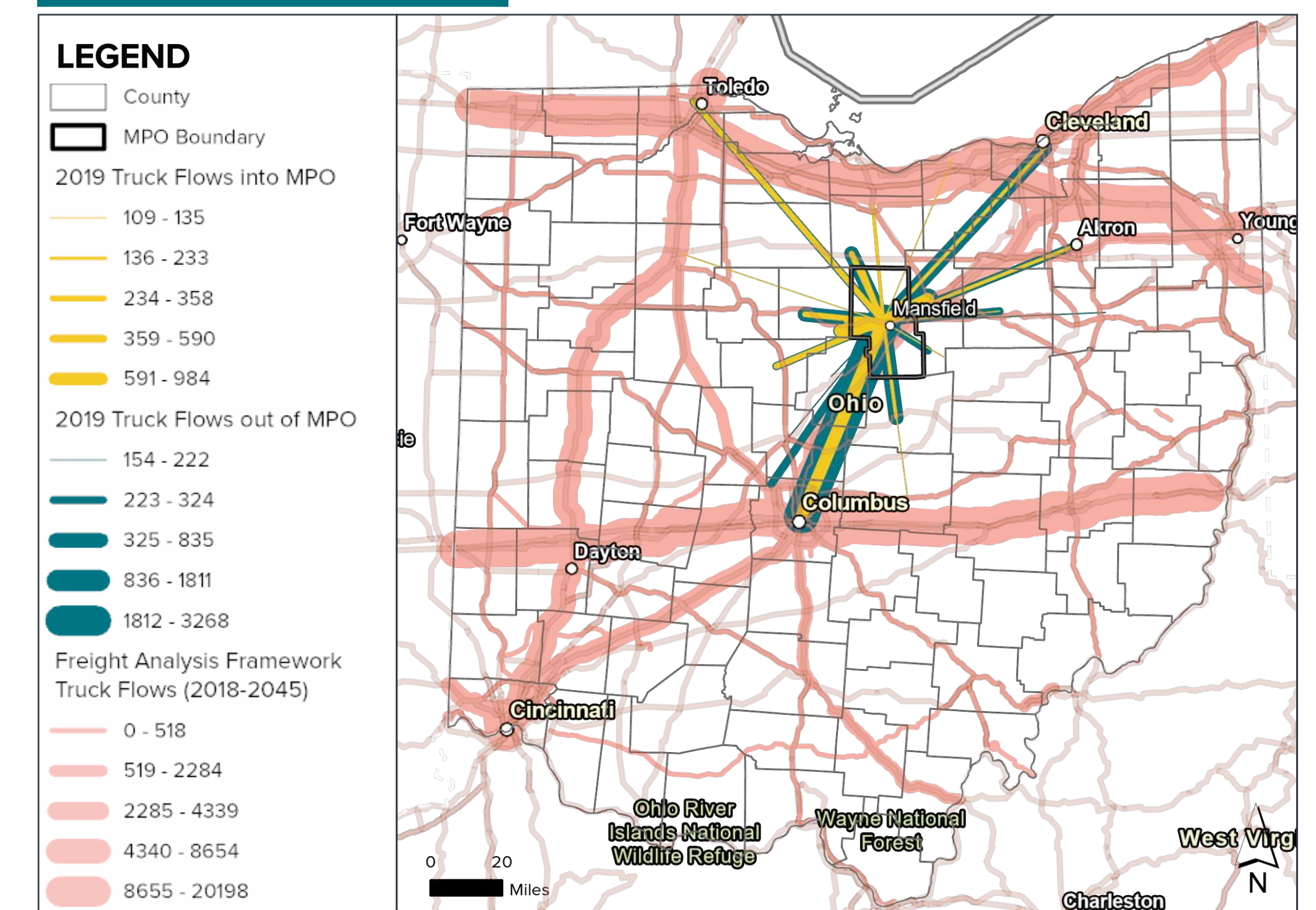
Population Change



Total Population



Truck Flows



WHAT IS MOST IMPORTANT?

VOTE FOR YOUR TOP THREE EVALUATION CRITERIA

Efficient Movement

Time, Locations, Accessibility, Cost, and Time

Economic Development

Jobs, Investment, and Shopping

Environmental Quality

Emissions, Pavement, and Sensitive Habitats

Social Sustainability

Alternative Modes, Accessibility, and Reducing Car Dependency

Livability

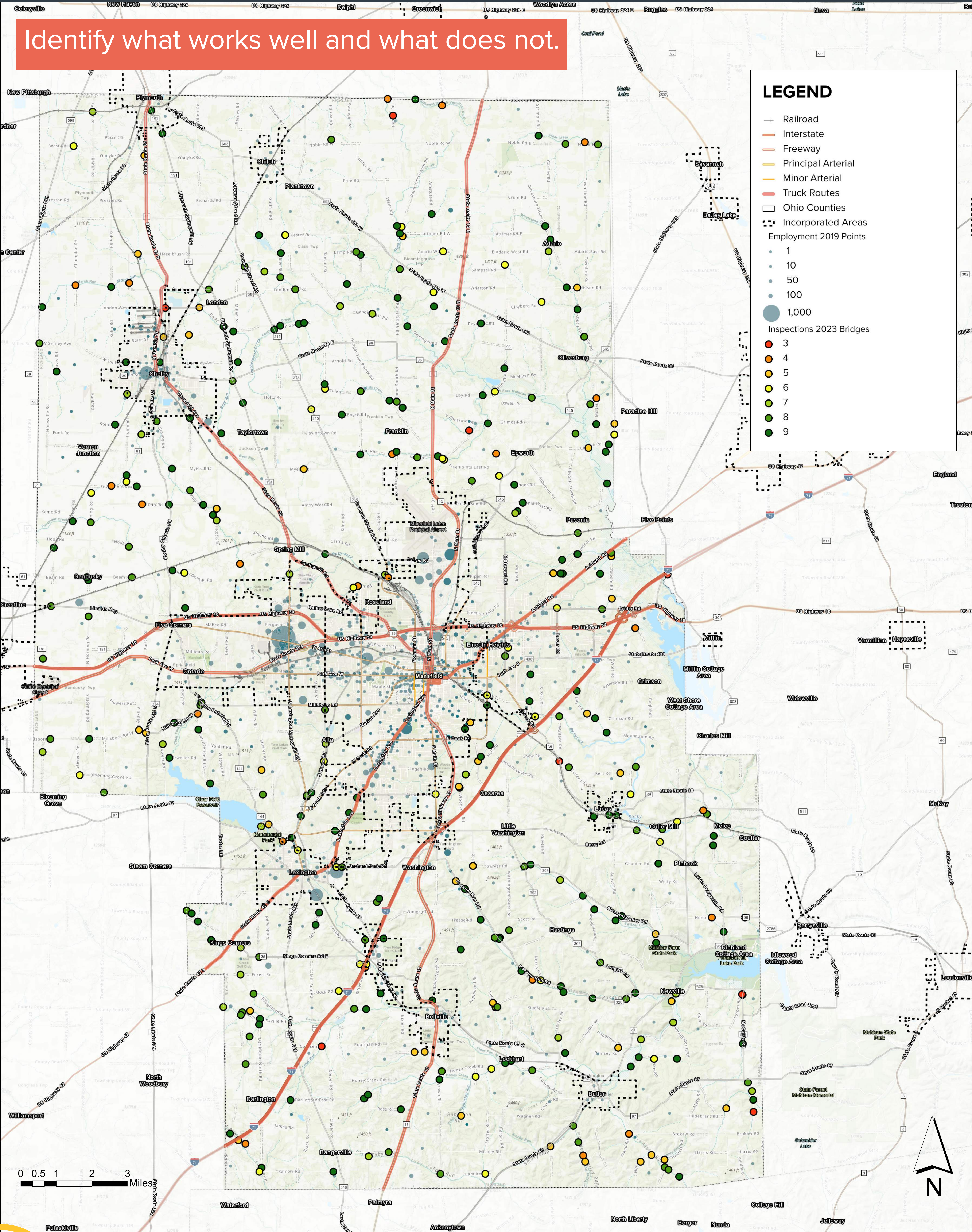
Neighborhood Quality, Noise, and Alternative Transportation

Resiliency

Time, Locations, Accessibility, Cost, and Time

ROAD MAP

Identify what works well and what does not.



LEGEND

- Railroad
- Interstate
- Freeway
- Principal Arterial
- Minor Arterial
- Truck Routes
- Ohio Counties
- Incorporated Areas
- Employment 2019 Points
- Inspections 2023 Bridges

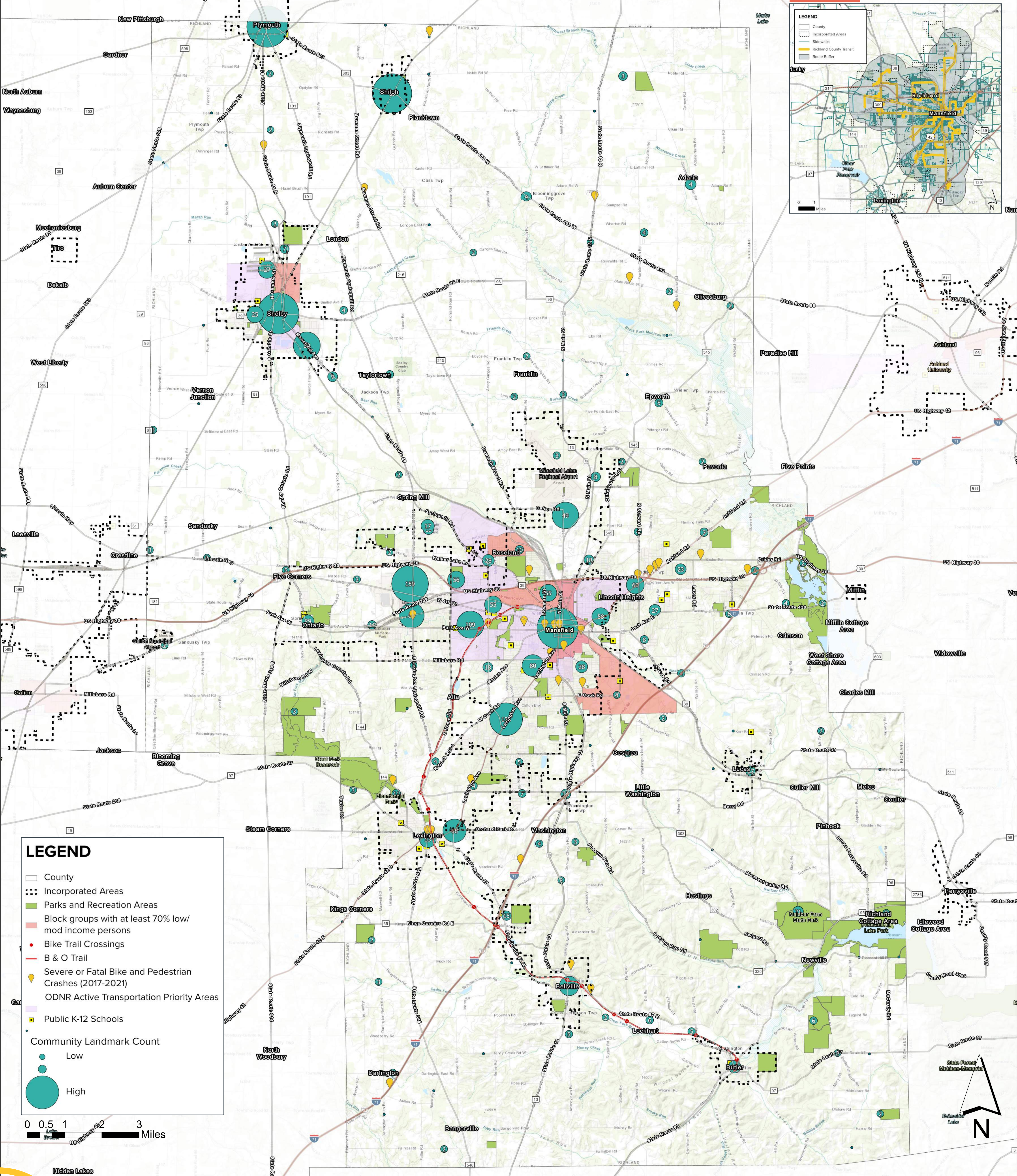
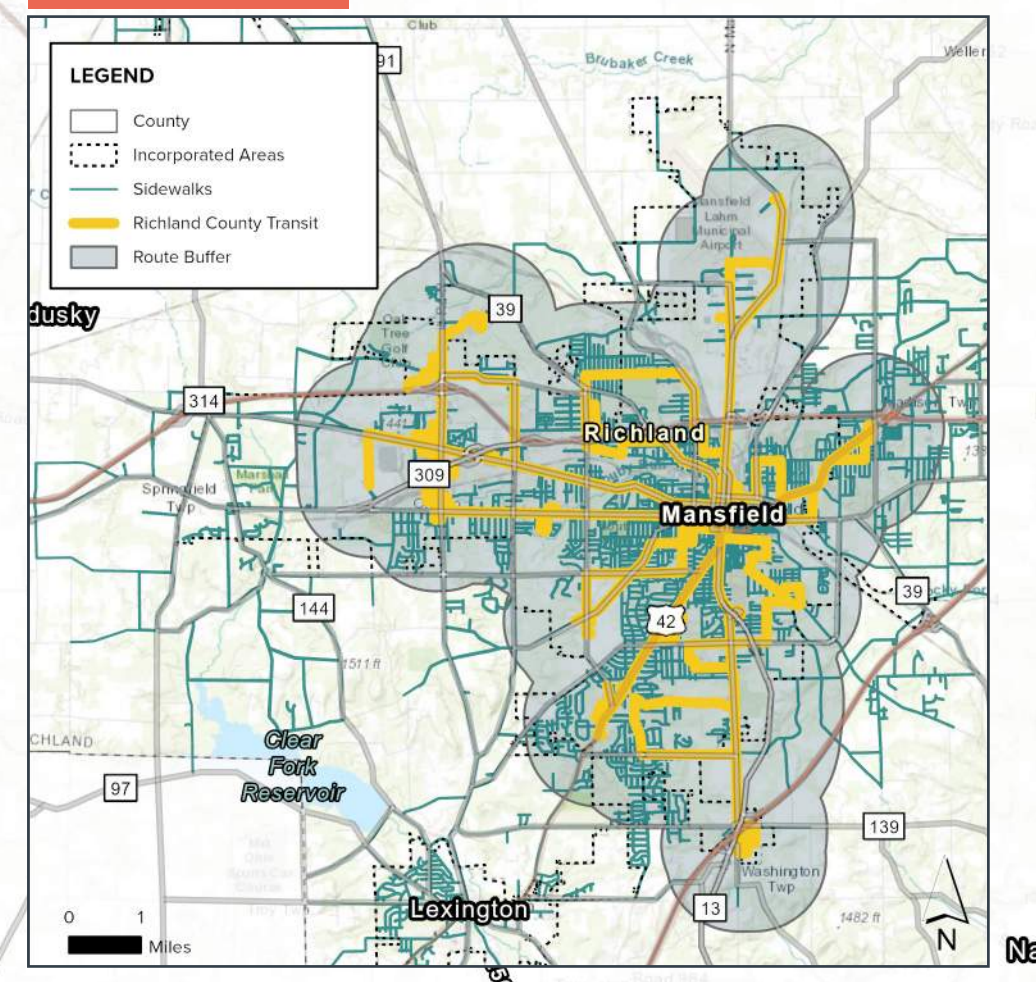
●	1
●	10
●	50
●	100
●	1,000

●	3
●	4
●	5
●	6
●	7
●	8
●	9

ACTIVE TRANSPORTATION & TRANSIT

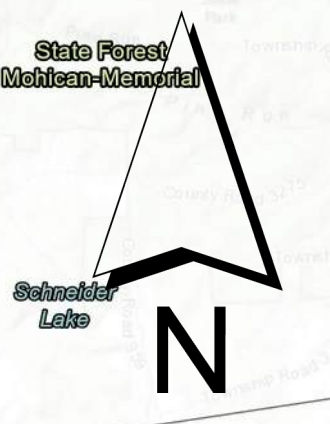
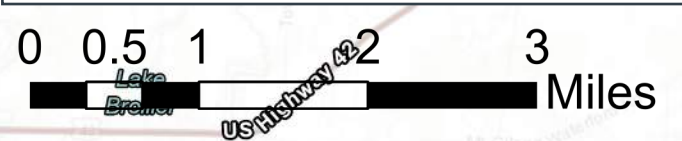
Identify what works well and what does not.

RCT



LEGEND

- County
- Incorporated Areas
- Parks and Recreation Areas
- Block groups with at least 70% low/mod income persons
- Bike Trail Crossings
- B & O Trail
- Severe or Fatal Bike and Pedestrian Crashes (2017-2021)
- ODNR Active Transportation Priority Areas
- Public K-12 Schools
- Community Landmark Count
 - Low
 - High



TELL US MORE

WRITE YOUR THOUGHTS HERE

Did we miss anything?

What else does the project team need to know?

THANK YOU FOR PARTICIPATING!



Project Website



Public Survey